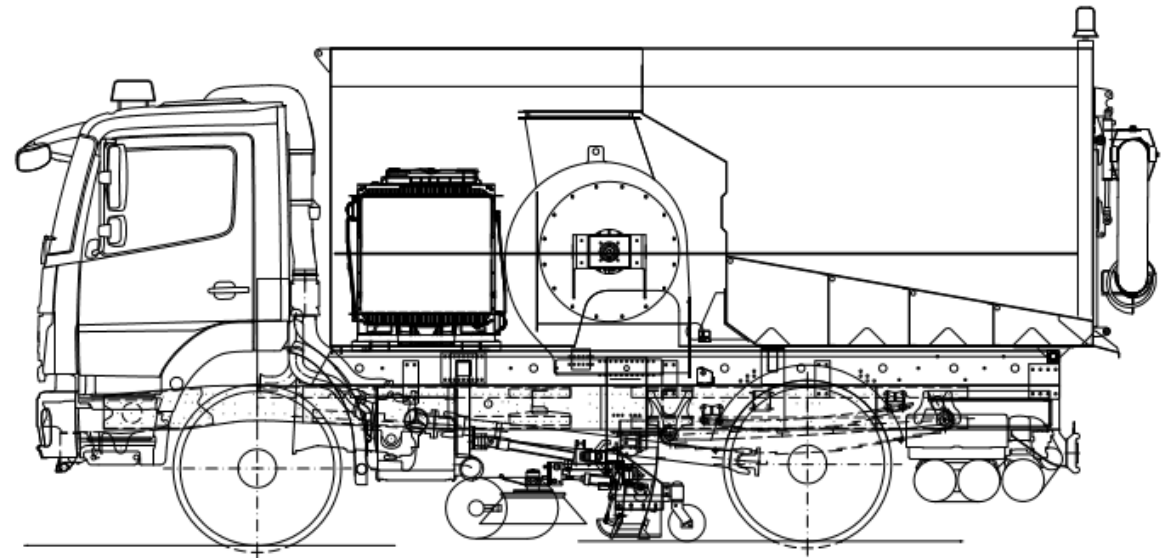


TVS 80 VACUUM ROAD SWEEPER



TECHNICAL DATA

Waste Bin Capacity (Gross)	8.2 m ³
Waste Bin Capacity (Net)	8 m ³
Water Tank	AISI 304 Stainless Steel, 2000 lt
Cleaning Width	2200 mm
Side Brush Diameter	700 mm
Center Brush Diameter	400 mm
Humidification	30 liters/minute
Vacuum Fan Suction Capacity	20,000 m ³ /hour
Reservoir Emptying Angle	50 °
High Pressure Washer	100 liters/minute, 150 bar
Sweeping Speed	0-15 km/hour





HYDRAULIC FAN DRIVE

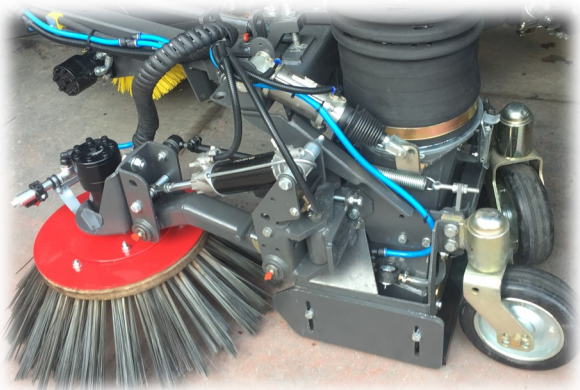
The fan drive is performed directly by a hydraulic motor without the use of an intermediate connecting element, in order to increase control accuracy and reduce maintenance intervals.



ADJUSTABLE SIDE BRUSH SPEED SYSTEM

This is achieved by hydraulically proportional control of the side sweeping brushes. It ensures economical brush consumption with low speeds during routine cleaning operations.

In difficult conditions, it aims to provide a more effective cleaning process by using high speeds.



HUMIDIFICATION SYSTEM

Nozzles placed on vacuum buckets, brushes, and the front of the vehicle provide effective humidification, minimizing the amount of dust raised during operation.



LARGE CAPACITY WATER TANK

The extra-large water tank significantly reduces the need for refilling, increasing efficiency with its high water capacity.



PNEUMATIC CONTROLLED SCREEN

The pneumatic controlled screen offers easy and quick cleaning without the need for the operator to enter the hopper.



WEED AND EDGE CLEANING UNIT

Used for cleaning weeds and stubborn, hardened dirt that accumulates in various areas along the highway.

With its hard and durable brush structure, it provides effective cleaning on the right and left sides of the vehicle.



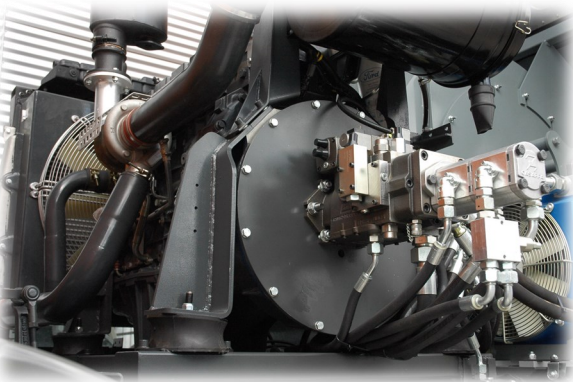
REAR VIEW CAMERA SYSTEM

Provides a wide and effective view to assist the operator during vehicle reversing maneuvers.



REAR VACUUM UNIT

Used for cleaning in areas inaccessible to the vehicle using vacuum capabilities. With its integrated mounting system and 3.5-meter hose length, it provides effective cleaning over a wide area without tiring the operator.



DIESEL POWER UNIT

Equipped with an auxiliary engine and hydraulic system.

Capacity to meet all the power needs of the sweeping vehicle.

It is applied as standard in vehicles without a PTO (Power Take-Off) system.